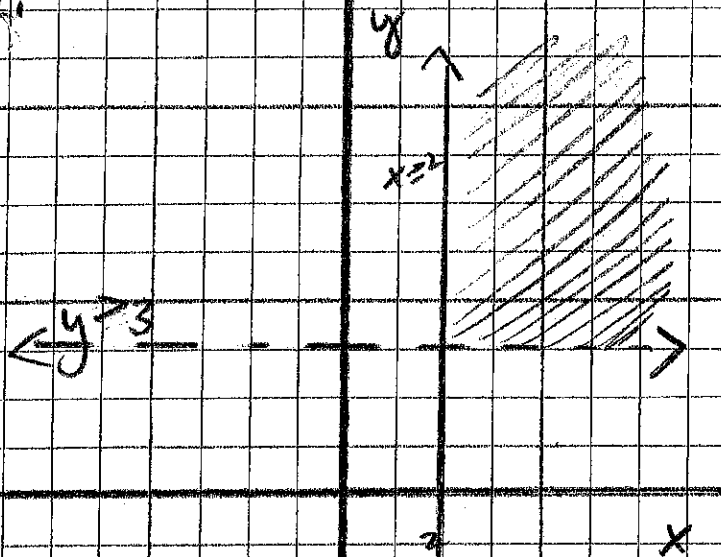
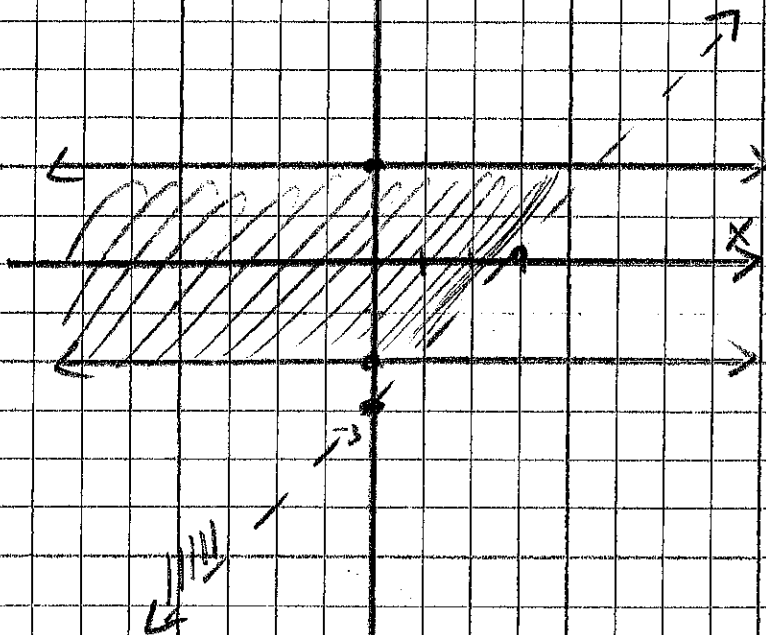


29/ p126 12, 15, 17, 20, 21, 24, 28

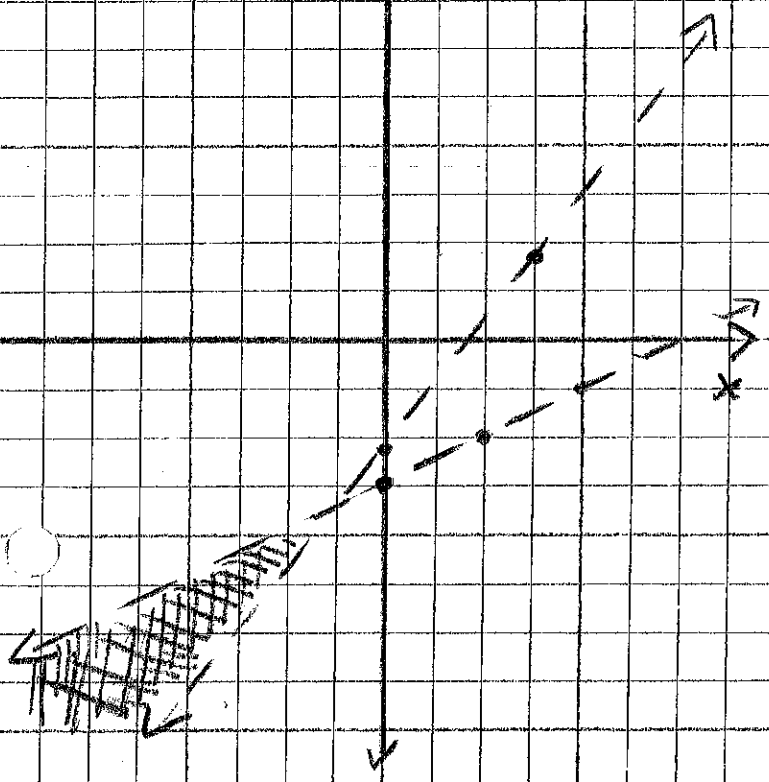
12.



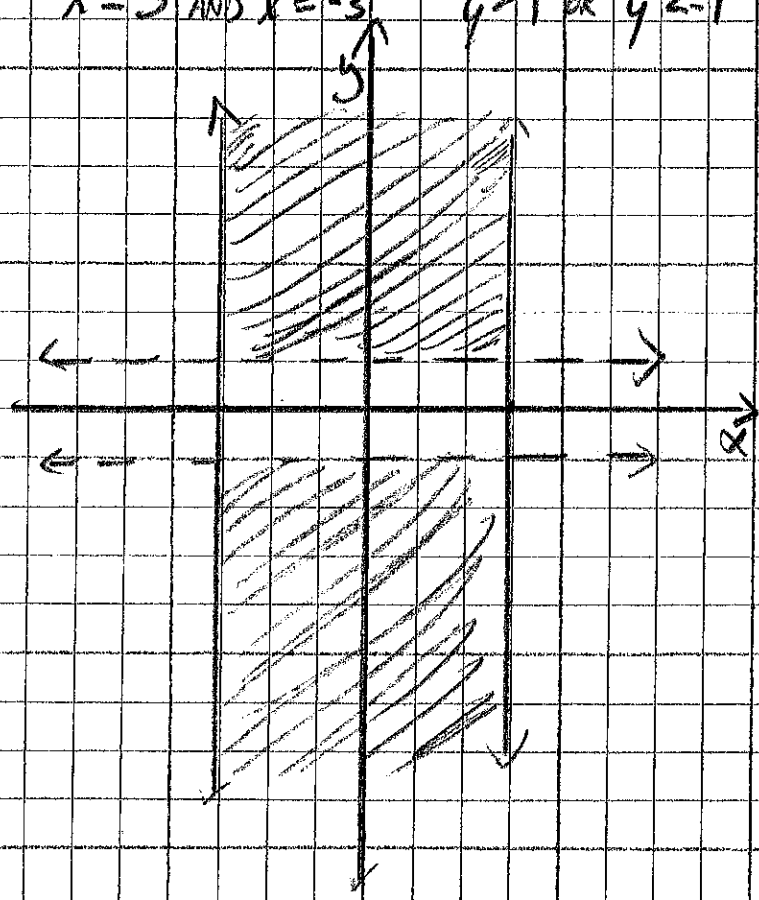
15. $y > x - 3$ $|y| \leq 2$
 $y \leq 2$ AND $y \geq -2$



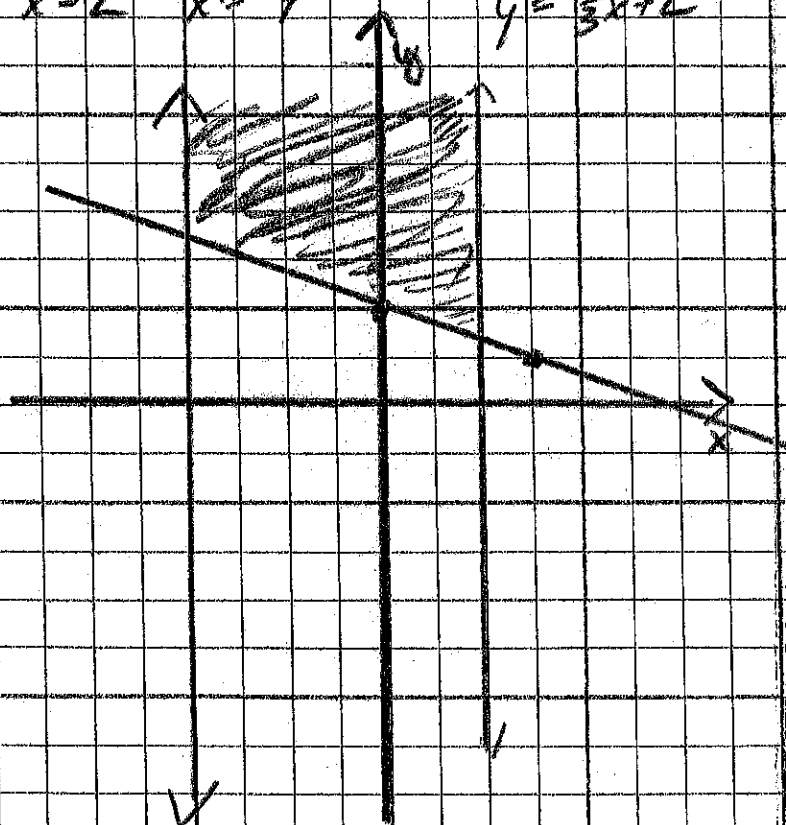
17. $4x - 3y < 7$ $2y - x < -6$
 $-3y < -4x + 7$ $2y < x - 6$
 $y > \frac{4}{3}x - \frac{7}{3}$ $y < \frac{1}{2}x - 3$



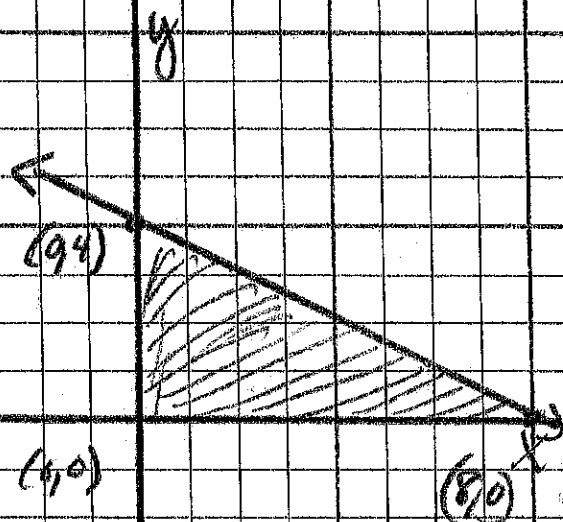
20. $|x| \leq 3$ $|y| \geq 1$
 $x \leq 3$ AND $x \geq -3$ $y \geq 1$ OR $y \leq -1$



21. $|x+1| \leq 3$ $x+3 \geq 6$
 $x+1 \leq 3$ AND $x+1 \geq -3$ $3 \geq -x+6$
 $x \leq 2$ $x \geq -4$ $y \leq -\frac{1}{3}x+2$



24. $y \geq 0$ $x \geq 0$
 $x+2y \leq 8$
 $(0,4)$
 $(8,0)$



28. $y \geq -3$ $x \leq 6$
 $y \geq x-2$ $2y \leq x+6$
 $y \leq \frac{1}{2}x + \frac{3}{2}$

